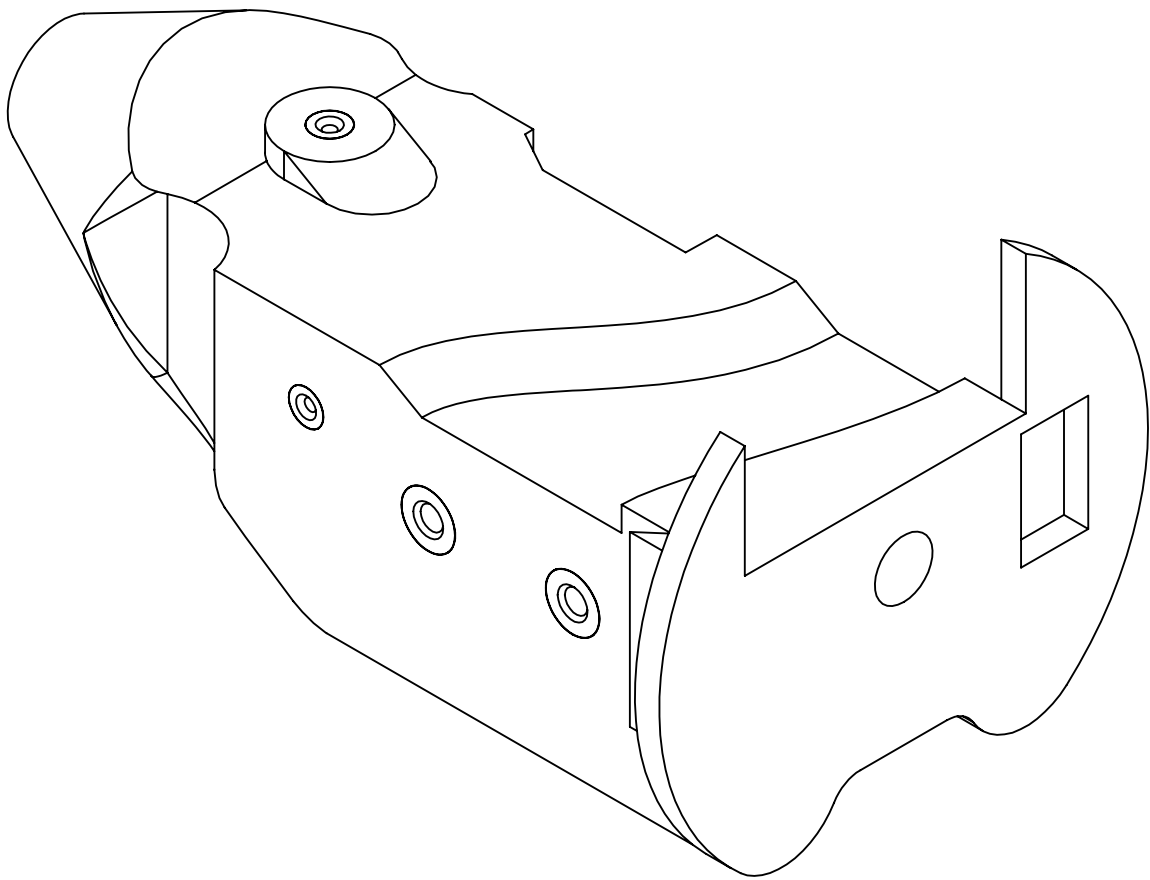
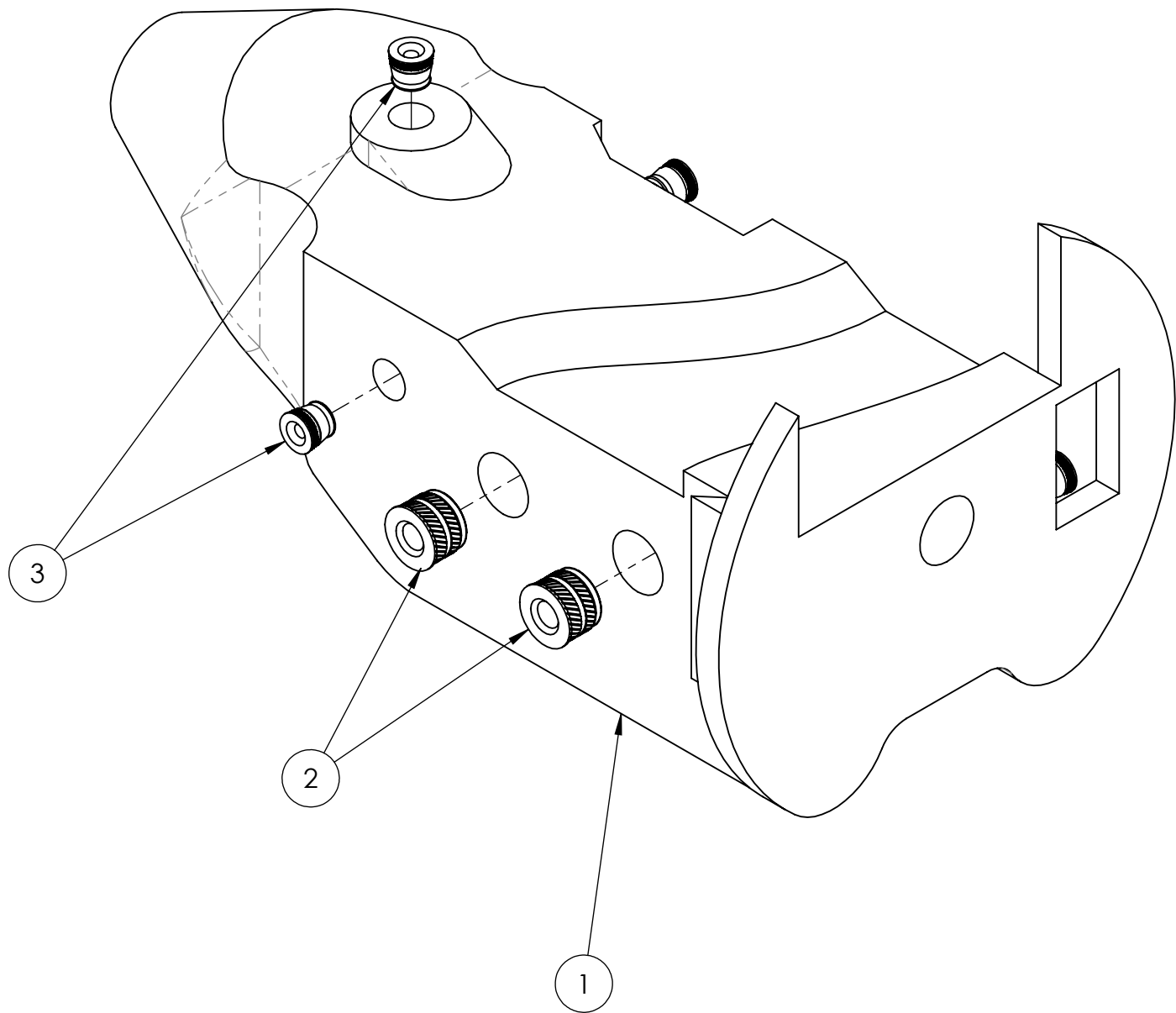
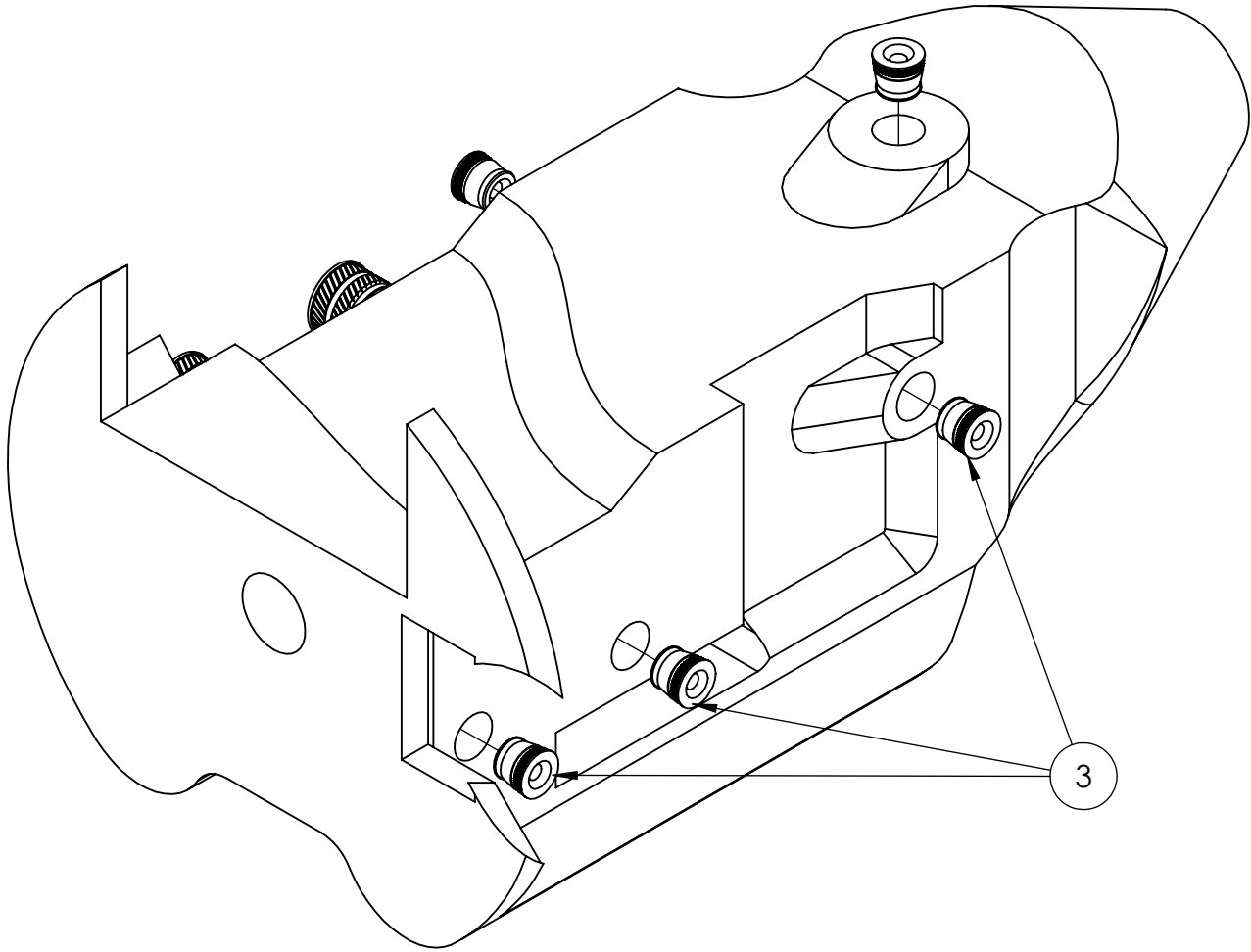


**NOTES:**  
1. PRESS HEAT SET INSERTS (ITEMS 2 AND 3) AS SHOWN, PER MANUFACTURER'S INSTRUCTIONS

REVISIONS				
ZONE	REV.	DESCRIPTION	DATE	APPROVED



3	94180A307	M2X0.4 BRONZE HEAT SET INSERT (MCMaster-CARR)	5
2	94180A331	M3X0.5 BRONZE HEAT SET INSERT (MCMaster-CARR)	2
1	FMS-GT-PRT-01	CENTRE BODY	1
ITEM	DRAWING NUMBER	DESCRIPTION	QTY

**PARTS LIST / BILL OF MATERIALS**

UNLESS OTHERWISE SPECIFIED:		NAME	DATE	<div>CGEC   CEED</div> <div>TITLE</div> <div><b>CENTRE BODY ASSY</b> GENERAL ASSY GYRO TRACE</div>	
DIM'S. ARE IN <b>MILLIMETERS</b> TOLERANCE ON ANGLES 0.5° 0 PLACE DECIMAL ± 0.5mm 1 PLACE DECIMAL ± 0.25mm 2 PLACE DECIMAL ± 0.13mm  BREAK ALL SHARP EDGES .25-.50mm  INTERPRET THIS DRAWING IN ACCORDANCE WITH: ASME Y14.5-2018	DRAWN	S.TREMBLAY	5/19/2021		
	CHECKED				
	MFG APPR.				
DO NOT SCALE DRAWING	MATERIAL		Q.A.		
	MATL. SPEC.	SURFACE TEXTURE	SIZE	DWG. NO.	REV
	HEAT TREAT		<b>C</b>	FMS-GT-ASM-01	-
		FINISH	SCALE: 2:1	WEIGHT: 0.14[g]	SHEET 1 OF 1